

257

SIMARANO DRIVE

MARLBOROUGH, MA

THE MARLBOROUGH TECHNOLOGY CENTER

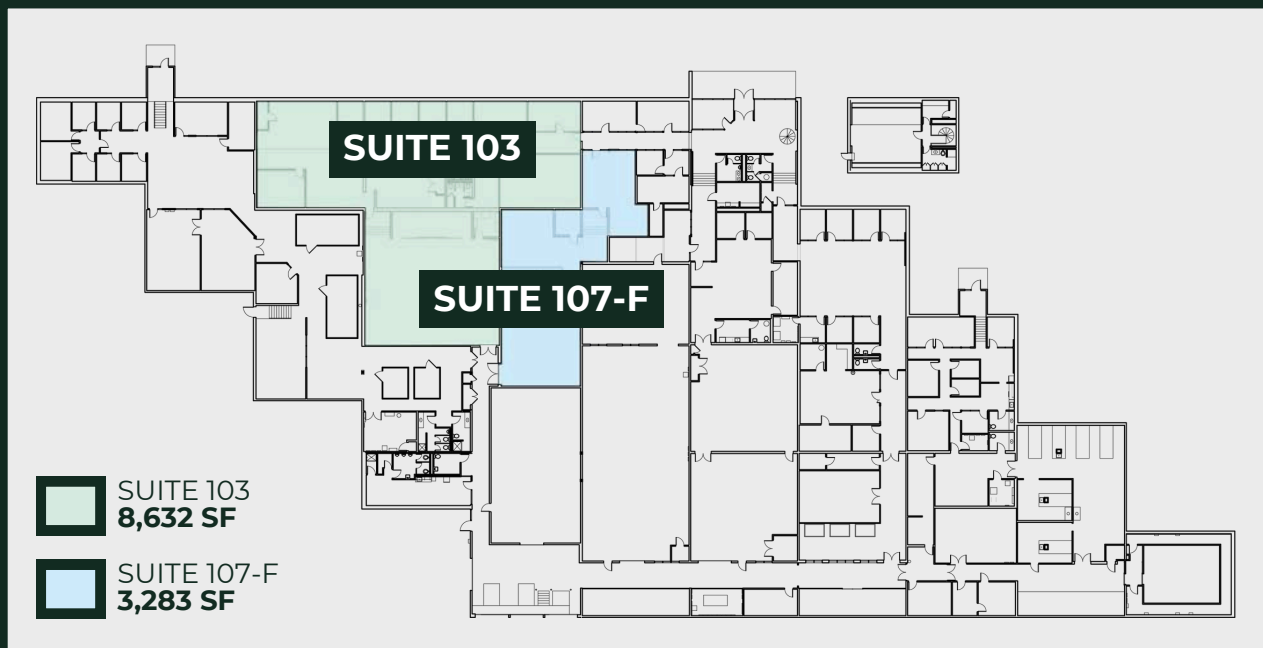


COMMERCIAL
O'BRIEN
PROPERTIES, INC.

PROPERTY SUMMARY/SPECIFICATIONS

SUMMARY

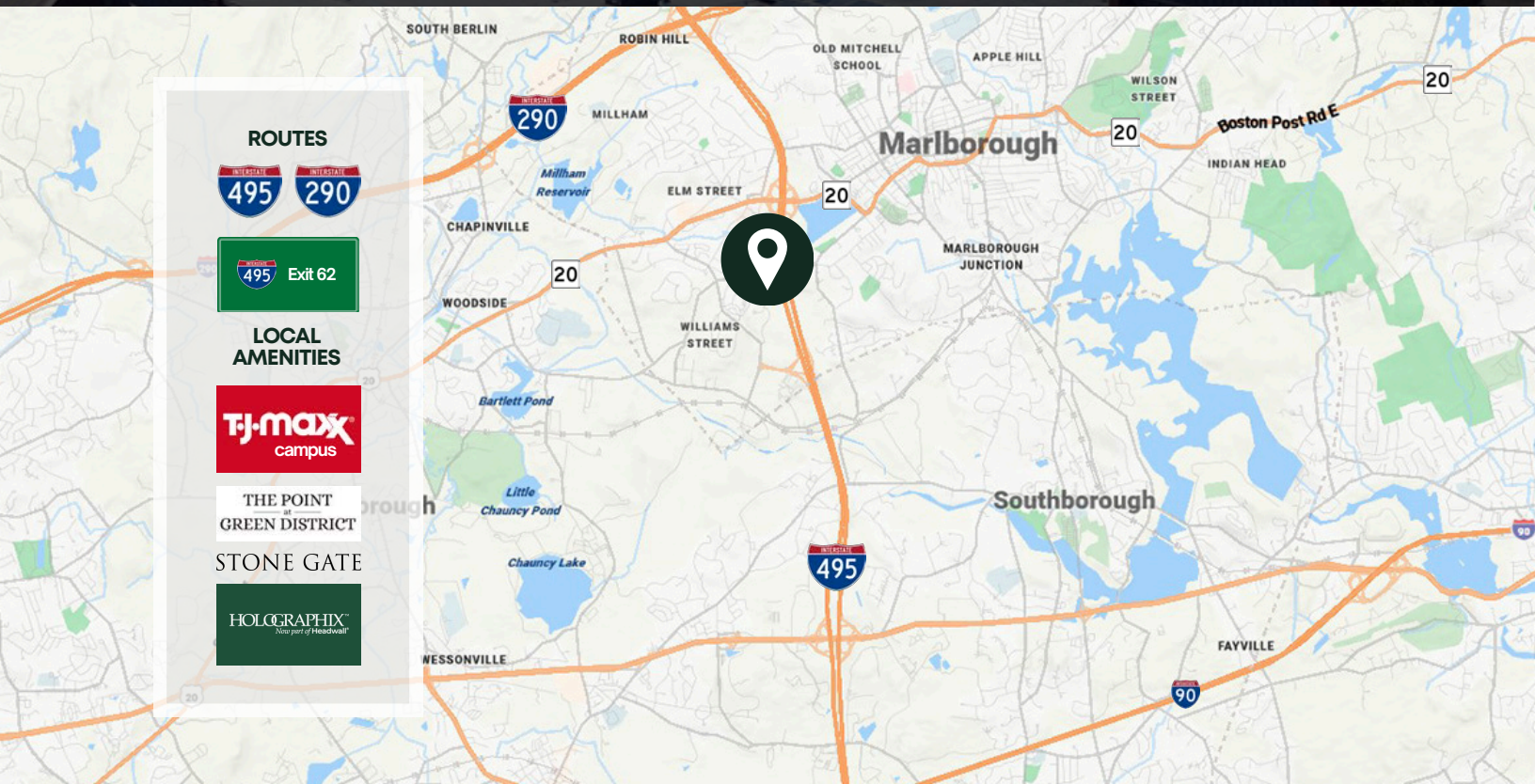
The Marlborough Technology Center located at 257 Simarano Drive in Marlborough, Massachusetts, the site offers direct access to I-495. The flagship building has received numerous industry accolades, including recognition for its exceptional architectural design. Characterized by its contemporary style and excellent amenities, this 148,000 SF master planned technology park features class-A flex space, boasts features such as abundant natural light, heavy power, high-level security, fire safety systems, full HVAC, and spacious loading and warehousing options, catering specifically to technology tenants.



SPECIFICATIONS

- . Architectural Recognition
- . Renovated: 2024
- . Total Size: 148,000 SF
- . Land: 12 Acres
- . Type: Flex R&D
- . Parking: Ample
- . Zoning: Industrial
- . Construction: Masonry
- . Roof: Rubber
- . Fire Suppression: Wet System
- . Utilities: City Water/Sewer
- . Loading Docks: Three (3)
- . Drive In Doors: One (1)
- . Power: 2,500 Amps 277-480V, 3 Phase
- . Ceiling Height: 12' - 20'
- . Stories: One (1)
- . Electric Provider: National Grid
- . HVAC: Full
- . Frame: Steel
- . Column Spacing: 30'W x 40'D
- . More Features: Skylights, Cafe, Conference Center and Outdoor Patio

THE PROPERTY/LOCATION



ROUTES



LOCAL AMENITIES



THE POINT
GREEN DISTRICT
STONE GATE



148,000 SF MASTER PLANNED TECHNOLOGY PARK

257

SIMARANO DRIVE

MARLBOROUGH, MA

THE MARLBOROUGH TECHNOLOGY CENTER



COMMERCIAL
O'BRIEN
PROPERTIES, INC.

BRANDON MEEKS
ASSOCIATE

508.281.2939
brandon@obriencommercial.com